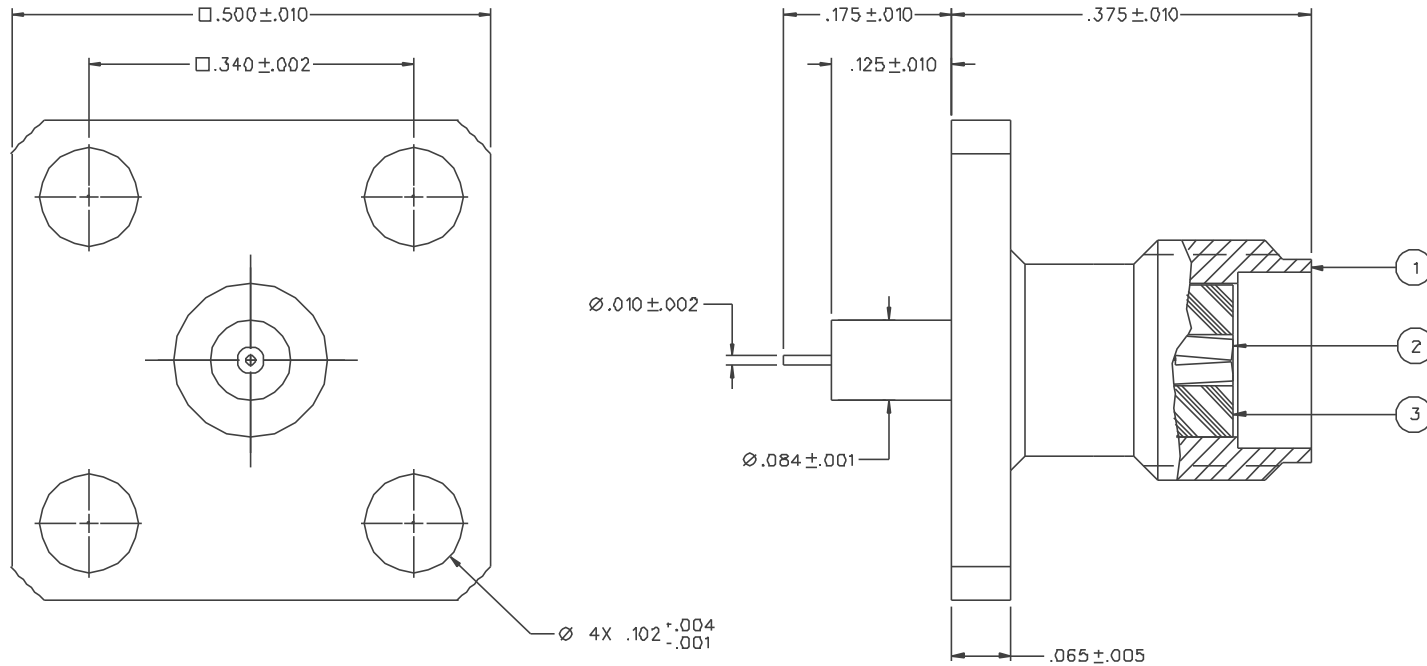


| PART NUMBER  | ITEM ①<br>BODY  | ITEM ②<br>CONTACT  | ITEM ③<br>INSULATOR |
|--------------|---|--|---------------------|
| 142-1701-191 | BRASS<br>GOLD PL .00001 MIN OVER<br>NICKEL PL .00005 MIN OVER<br>COPPER PL .00005 MIN | BERYLLIUM COPPER<br>GOLD PL .00005 MIN OVER<br>NICKEL PL .00005 MIN OVER<br>COPPER PL .00005 MIN | TEFLON              |
| 142-1701-196 | BRASS<br>NICKEL PL .0001 MIN OVER<br>COPPER PL .00005 MIN                             | BERYLLIUM COPPER<br>GOLD PL .00005 MIN OVER<br>NICKEL PL .00005 MIN OVER<br>COPPER PL .00005 MIN | TEFLON              |



NOTES:

1. SPECIFICATIONS:

IMPEDANCE: 50 OHMS  
 FREQUENCY RANGE: 0-18 GHz  
 VSWR: DEPENDENT UPON APPLICATION  
 WORKING VOLTAGE: 335 VRMS MAX AT SEA LEVEL  
 DIELECTRIC WITHSTANDING VOLTAGE: 1000 VRMS MIN AT SEA LEVEL  
 INSULATION RESISTANCE: 5000 MEGOHM MIN  
 CONTACT RESISTANCE:  
 CENTER CONTACT - INITIAL 3.0 MILLIOHM MAX, AFTER ENVIRONMENTAL 4.0 MILLIOHM MAX  
 OUTER CONDUCTOR - INITIAL 2.0 MILLIOHM MAX, AFTER ENVIRONMENTAL NOT APPLICABLE  
 BRAID TO BODY - NOT APPLICABLE  
 CORONA LEVEL: 250 VOLTS MIN AT 70,000 FEET  
 INSERTION LOSS: DEPENDENT UPON APPLICATION  
 RF LEAKAGE: -70 dB MIN AT 2.5 GHz  
 RF HIGH POTENTIAL WITHSTANDING VOLTAGE: 670 VRMS MIN AT 4 AND 7 MHz

MECHANICAL:

ENGAGE/DISENGAGE TORQUE: 2 INCH-POUNDS MAX  
 MATING TORQUE: 7-10 INCH POUNDS  
 COUPLING PROOF TORQUE: NOT APPLICABLE  
 COUPLING NUT RETENTION: NOT APPLICABLE  
 CONTACT RETENTION: 6 LBS MIN AXIAL FORCE, 4 IN-OZ MIN RADIAL TORQUE  
 CABLE ACCEPTABILITY: NOT APPLICABLE  
 CABLE HEX CRIMP SIZE: NOT APPLICABLE  
 CABLE RETENTION: NOT APPLICABLE  
 DURABILITY: 500 CYCLES MIN

ENVIRONMENTAL:

{MEETS OR EXCEEDS THE APPLICABLE PARAGRAPH OF MIL-C-39012}  
 THERMAL SHOCK: MIL-STD-202, METHOD 107, CONDITION B  
 OPERATING TEMPERATURE: -65 DEG C TO 165 DEG C  
 CORROSION: MIL-STD-202, METHOD 101, CONDITION B  
 SHOCK: MIL-STD-202, METHOD 213, CONDITION I  
 VIBRATION: ML-STD-202, METHOD 204, CONDITION D  
 MOISTURE RESISTANCE: MIL-STD-202, METHOD 106


|  |                                       |
|--|---------------------------------------|
| DRAWING NO.<br>C - 142-1701-191/200        |                                       |
| 0 REVISIONS                                |                                       |
| ENGINEERING RELEASE                        |                                       |
| 1  | 7-9-97 R H J T R Z-22-97 ECN 44859    |
| VERSION UPDATE                             |                                       |
| to   | 10-21-98 R H J T R 11-11-98 ECN 45919 |
| CHANGED: DIA .010+-.002 WAS DIA .010+-.001 |                                       |
| * REVISION NUMBER FOLLOWED BY AN ALPHA *   |                                       |
| * CHARACTER INDICATES DRAWING CLARIFI. *   |                                       |
| * CATION OR PART NUMBER ADDITION ONLY. *   |                                       |
| 1b   | 1-6-98 R H J T R ECN 46115            |

CUSTOMER DRAWING

THIS DRAWING TO BE INTERPRETED PER ANSI Y 14.5M - 1982

"μSTATION"

COMPANY CONFIDENTIAL

|                                      |                         |                 |  |
|--------------------------------------|-------------------------|-----------------|--|
| TOLERANCE UNLESS OTHERWISE SPECIFIED | DRAWN BY<br>JRK         | DATE<br>6-9-97  |  299 Johnson Ave.<br>P.O. Box 1732<br>Waseca, MN 56093-0832 |
| DECIMALS<br>.XX                      | CHECKED BY<br>JRK       | DATE<br>7-15-97 |  |
| .XXX+-.003                           | APPROVED BY<br>TAK      | DATE<br>7-16-97 | TITLE<br>JACK ASSEMBLY, 4 HOLE<br>FLANGE MOUNT, .010 PIN<br>EXTENDED DIELECTRIC SMA  |
| MATL                                 | APPROVED BY<br>RJB      | DATE<br>7-17-97 | CODE NO.   |
| FINISH                               | RELEASE DATE<br>7-22-97 | DATE            | DRAWING NO.<br>C - 142-1701-191/200  |
| SCALE 10:1                           |                         |                 | U/M INCH SHEET 2 OF 2  |